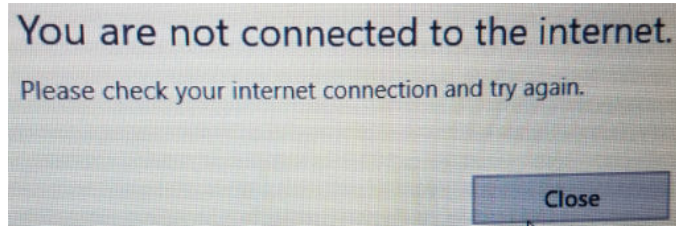
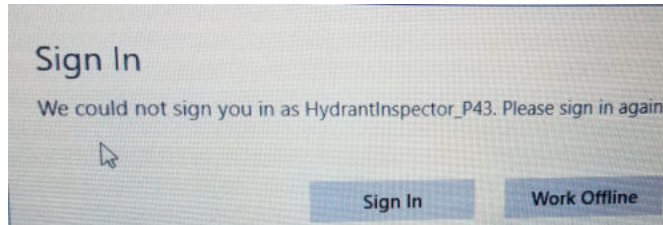


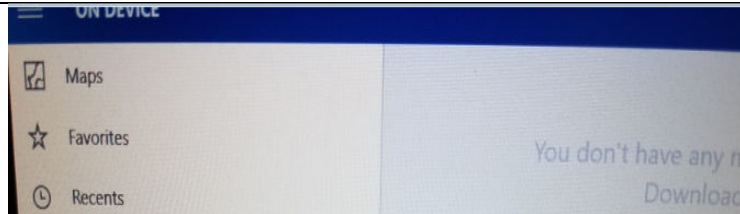
Hydrant App Sign-In

Initially the Collector for ArcGIS application will sign in automatically. The sign in is unique for each fire apparatus; however each sign in starts with "HydrantInspector_" followed by the unit number. The Hydrant Application allows the login to be active for 7 to 10 days. After that the sign in expires and you will receive an error message that you could not be signed in. All passwords are set to: **Kcfd1234!**

To correct this, click on the "Sign In" button. Next you will receive an error that you are not connected to the internet. Click the "Close" button.



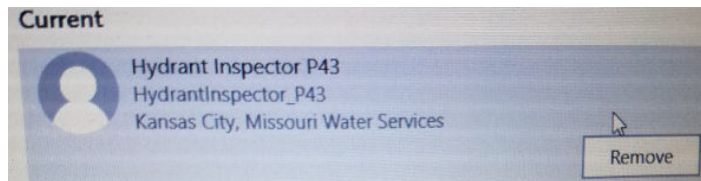
Click on the menu button (the three lines) at the top left corner.



Next click on the account name.

Hydrant Inspector P43

Select the account and click the "Remove" button.



You will now be at the Sign In Screen. Click the "Sign in" button.

Collector for ArcGIS

Sign in

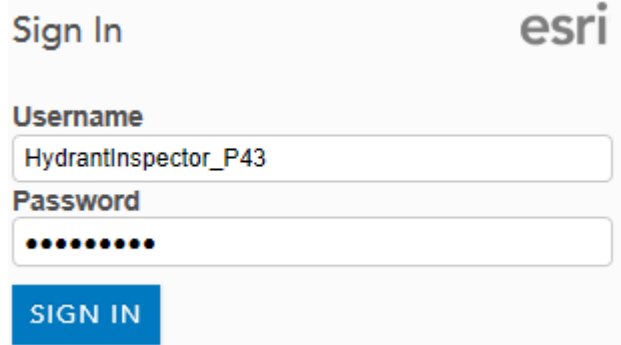
Try Collector

Click on the "ArcGIS Online" button.

ArcGIS Online

Type-in your appropriate username and password. Remember the username is unique for each fire apparatus; however each username starts with HydrantInspector_” followed by the unit number.

We have made the passwords all the same and it is set to: **Kcfd1234!**



The image shows a screenshot of an Esri Sign In form. At the top left, it says "Sign In" and at the top right is the "esri" logo. Below the logo, there are two input fields. The first is labeled "Username" and contains the text "HydrantInspector_P43". The second is labeled "Password" and contains ten black dots. Below the password field is a blue button with the text "SIGN IN" in white capital letters.